



Live Online Tutoring

and so much more!



About Us

Brainfuse HelpNow is a unique tutoring and study suite designed for patrons of all ages. We serve hundreds of library systems throughout the country, including the New York Public Library, Los Angeles County Public Library, the Houston Public Library, the San Francisco Public Library, the Baltimore County Public Library, and North America's largest online homework help program through the Chicago Public Library.

After more than two decades, and millions of tutoring sessions, Brainfuse is one of the most experienced tutoring companies in the nation. We remain committed to providing high quality academic support and continually strive to meet student needs through innovative features and services.



"My tutor was great. I understand how to do the math in school now. This is a great program!"

"My tutor was AWESOME! I will be recommending this service to all of my friends ."



On-Demand, One-to-One Online Homework Help

Students draw or type their question in our online classroom and receive live homework assistance from a Brainfuse tutor. Our tutors don't simply give answers but help students master underlying academic concepts.



MATH: Elementary School, Middle School, Algebra I, Algebra II, Geometry, Trigonometry, Pre-calculus, Calculus, and Statistics (including AP Levels)



SCIENCE: Elementary School, Middle School, Biology, Chemistry, Physics, and Earth Science (including AP Levels)



ENGLISH/LANGUAGE ARTS and ENGLISH AS A SECOND LANGUAGE (ESL): Kindergarten through Adult Learners



SOCIAL STUDIES: Elementary School, Middle School, Political Science, World History, U.S. History, State History, and Geography (Including AP Levels)



TEST PREPARATION: SAT, ACT, GED, ASVAB, USCIS, HiSet, TASC, GRE, TOEFL, college placement tests, and more



LIVE FAFSA ASSISTANCE: Understanding, Completing, and Submitting the FAFSA application



DIGITAL LITERACY: Microsoft Office (Word, PowerPoint, and Excel) and other productivity suites



FOREIGN LANGUAGE ASSISTANCE



CAREER SERVICES: Cover Letters, Resumes, and Business Writing



SKILLS REVIEW Develop, Refresh, and Refine Skills with Lessons and Videos

Additional subjects are available upon request

Comprehensive Writing Assistance

Drawing from our experienced staff and research-based methodologies, we offer a robust writing lab that helps users become better writers:

- **Real-Time Writing Assistance:** Patrons receive writing assistance from Brainfuse tutors via our online classroom that features intuitive copy/paste functions, secure file sharing, and real-time document sharing (including Word, PowerPoint, and Excel).
- **Intensive Writing Analysis:** Users have the option to submit papers via our secure file-sharing feature, which does not require an email address, to receive an intensive analysis of their work. Our writing experts carefully analyze each paper with respect to voice, word choice, content, sentence fluency, and organization. Papers (complete with constructive comments) are returned to users within 24 hours. In addition to comments, users receive an analytical rubric with specific suggestions for follow-up skills building tutoring sessions.



Homework Tools

Brainfuse offers several homework tools to facilitate self-guided learning:



Support for Distance Learners: Remote learning can be difficult for both children and parents. Brainfuse tutors can help students (and parents) stay on track with one-to-one skills building and homework help tutoring sessions.



SkillSurfer: SkillSurfer is an extensive library of Brainfuse-created lessons, video tutorials, and practice tests in a wide range of academic subjects. SkillSurfer's current offerings include state-aligned/common core skills building, practice tests (ACT, SAT, GED, ASVAB, TEAS, USCIS, etc.), college application assistance, ESL services, a parent corner, and more.



Flashbulb™: Patrons enjoy 24/7 access to an extensive library of online flashcard sets in virtually every subject.



Send Question Center: The Send Question Center is an asynchronous service for users who want a detailed, extended explanation of a difficult concept but are not inclined to meet with a tutor in real time.



Foreign Language Center: Our foreign language center features on-demand homework help for students who are taking a foreign language class. In addition, there is a vocabulary builder for various languages.



CloudPack™: CloudPack helps users better integrate their classroom materials with their tutoring sessions. With CloudPack, users can store documents, class notes, and other materials in their personal "CloudPack" and share these items with tutors during a live session.



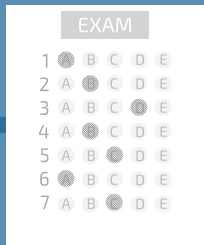
Digital Literacy Assistance: Brainfuse tutors provide live digital literacy support to users who need assistance using their computer to complete a personal project or academic assignment (for example inserting footnotes in a term paper or creating a PowerPoint for a class presentation).



Games of the Mind: Learn chess strategies and improve your cognitive thinking with an expert chess coach. Users can also access lessons on the basics of chess, tactics, and maneuvers.

LEAP Learning Platform

LEAP helps patrons build academic skills through targeted lessons, quizzes, and live, online tutoring. After finishing a diagnostic test, LEAP instantly prepares a customized learning plan, broken down by skill areas, for patrons to complete at their own pace. The learning plan contains lessons, videos, and quizzes to assist patrons with specific concepts and offers patrons easy, one-click access to a live tutor at any point for extra help.



DIAGNOSTIC TEST

Patrons take a diagnostic test to determine areas requiring extra attention.



LEARNING PLAN

Following the diagnostic test, LEAP prepares a customized learning plan that contains lessons, videos, and quizzes.



LIVE TUTORING

Live tutoring is always one click away as patrons work through LEAP's learning plan.



ACHIEVE MASTERY

LEAP makes it easy for patrons to track their progress until they have achieved mastery.



“Every time I use Brainfuse, I get to learn from the best! Thanks for all your help!”

The Adult Learning Center

We built the Adult Learning Center to meet the unique needs of the adult population. The Adult Learning Center offers skills building, test preparation, and a unique academic skills center featuring live, online tutors.

- **Live Skills Tutoring:** Adult learners who need help with a class assignment, or need academic support for any other reason, can connect with a live tutor to master academic concepts and build career-enhancing skills.
- **Writing Assistance:** The Adult Learning Center offers both live writing assistance and an intensive writing lab to help users produce business letters, term papers, job resumes, or any other piece of writing.
- **Test Center:** Our Adult Test Center helps adult learners prepare for tests and master academic skills.



Our Online Classroom

Field-tested and refined for two decades, the Brainfuse Online Classroom epitomizes ease-of-use and accessibility. Our classroom allows for instant, robust online communication between tutors and students.

Features include:

- freehand drawing
- two-way audio
- equation editor
- web-content sharing
- text editing
- screen sharing
- emoticons
- advanced math/science symbols
- instant messaging
- real-time file sharing
- copy/paste

The screenshot displays the Brainfuse Online Classroom interface. On the left, a graphing tool is active, showing a coordinate plane with a grid. The x-axis and y-axis both range from -10 to 10, with major grid lines every 2 units. The equation $y = \frac{4}{3}x - 2$ is displayed in the top left corner of the graph area. Two blue dots are plotted on the grid at the points $(0, -2)$ and $(3, 2)$. A mouse cursor is positioned over the point $(3, 2)$. Below the graph is a toolbar with various icons for drawing, text editing, and mathematical symbols.

On the right side of the interface is a chat window titled "ChristineDsp". The chat history shows the following messages:

- A system message: "Welcome to Brainfuse. A Tutor will be right with you."
- A student message: "Hello! :D How may I help you?"
- A student message: "Hi, I have math homework. I need to graph this equation: $4x-3y = 6$ "

The chat window includes a "Send" button and a text input field at the bottom.



Alignment to Common Core & Other State Standards

Our tutoring services, skills building lessons, and practice tests are aligned to state-specific curriculum and Common Core Standards.

Spanish Language Support

Brainfuse currently offers tutoring services in Spanish for all subjects offered in English. Our Spanish-speaking tutors are all US-based.



Our Tutors

We staff thousands of high-caliber tutors in virtually every academic subject. All of our tutors undergo a multi-step evaluation and training process, which includes:

- Resume Review
- Online Proficiency Test
- Comprehensive Background Check
- Quality Assurance Procedures
- Interview
- Simulated Tutoring Session Evaluations
- Training



Our Mobile App

We designed our Mobile app to enhance HelpNow by providing anywhere access to our live help, learning materials, and study tools. Our mobile app is free and is available in both the Apple App (iOS) and Google Play (Android) stores. It is designed to work on both smartphones and tablets. Features include:

- Live Tutoring Help
- Snap-n-Send: Scan any document and send it to the online classroom
- Note Taking and Document Sharing
- Study Alert Settings
- Homework Tracker
- On-the-Go Question Center
- Mobile Flashcards

SCHEDULE A PERSONALIZED WEBINAR

Find out more about the Brainfuse HelpNow Learning Suite and how it can benefit your community. If you are interested in scheduling a product demonstration or have any questions about the services we offer, please reach out to us!

We would love to talk to you about our products and how the services we provide can transform your library through increased value in your community.

To learn more about us and our services, visit us at www.brainfuse.com or email us with inquiries at info@brainfuse.com.

866-272-4638

info@brainfuse.com

www.brainfuse.com





www.brainfuse.com



[@brainfuse](https://twitter.com/brainfuse)



info@brainfuse.com



[instagram.com/brainfuse](https://www.instagram.com/brainfuse)



866-brainfuse (866-272-4638)



[facebook.com/brainfuselearning](https://www.facebook.com/brainfuselearning)